

Beverage and Snack Vending Machines and School Stores



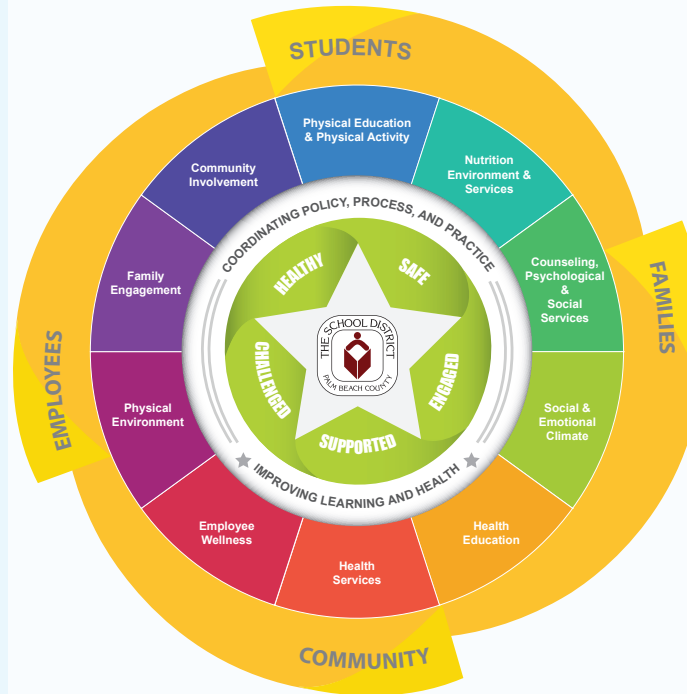
FACTS

According to the United States Department of Agriculture (USDA)...

Vending Machines and School Stores:

- Are NOT fundraisers.
- May be operational at any time during the school day.
- Must ALWAYS be Smart Snack Compliant.

Whole School, Whole Community, Whole Child Culture...



For more information contact:
healthyschoolteams@palmbeachschools.org

Non-Discrimination Statement

In accordance with federal civil rights law and U.S. Department of Agriculture (USDA) civil rights regulations and policies, this institution is prohibited from discriminating on the basis of race, color, national origin, sex (including gender identity and sexual orientation), disability, age, or reprisal or retaliation for prior civil rights activity.

Program information may be made available in languages other than English. Persons with disabilities who require alternative means of communication to obtain program information (e.g., Braille, large print, audiotape, American Sign Language), should contact the responsible state or local agency that administers the program or USDA's TARGET Center at (202) 720-2600 (voice and TTY) or contact USDA through the Federal Relay Service at (800) 877-8339.

To file a program discrimination complaint, a Complainant should complete a Form AD-3027, USDA Program Discrimination Complaint Form which can be obtained online at: <https://www.usda.gov/sites/default/files/documents/USDA-OASCR%20P-Complaint-Form-0508-0002-508-11-28-17Fax2Mail.pdf>, from any USDA office, by calling (866) 632-9992, or by writing a letter addressed to USDA. The letter must contain the complainant's name, address, telephone number, and a written description of the alleged discriminatory action in sufficient detail to inform the Assistant Secretary for Civil Rights (ASCR) about the nature and date of an alleged civil rights violation. The completed AD-3027 form or letter must be submitted to USDA by: mail: U.S. Department of Agriculture, Office of the Assistant Secretary for Civil Rights 1400 Independence Avenue, SW, Washington, D.C. 20250-9410; or fax: (833) 256-1665 or (202) 690-7442; or email: Program.Intake@usda.gov

Food Fundraising Guidelines



Healthy School Teams

Florida Statute requires that all food and beverages **SOLD** to students follow specific guidelines.

To maintain consistent standards district-wide, keep this document nearby.

For more information
 District Hub/Teachers/HealthySchoolTeams



Food Fundraisers

There are important guidelines that must be followed when conducting food fundraisers.

When selling food to students, the food must:

1. Be Smart Snack compliant.
2. Be sold **30** minutes after the last lunch period ends.
3. Adhere to the allowable fundraising exemption amounts for the school type.
4. Be tracked and reported
 - Dates and times for each food fundraiser must be submitted to the School Food Service (SFS) Department throughout the school year by completing the Food Fundraising Tracking Form.



Allowable Exemptions

The State of Florida allows schools to “break the Smart Snack Rule” a specific number of days each year which is called an “**exemption.**” Exemption amounts are based upon the school type which are noted below

Elementary Schools

(Including K-6, if applicable)

Allowable Exemptions

5 days during the school year

Allowable Selling Times

30 minutes after the last lunch

Middle Schools

(6-8) or Junior High (7-9)

Allowable Exemptions

10 days during the school year

Allowable Selling Times

30 minutes after the last lunch

High Schools

(9-12)

Allowable Exemptions

15 days during the school year

Allowable Selling Times

30 minutes after the last lunch

Combination Schools

(PK-8, 6-12, K-12)

Allowable Exemptions

10 days during the school year

Allowable Selling Times

30 minutes after the last lunch

The USDA defines the school day as...

Midnight to **30** minutes after the official school day ends (last bell) which is specific to these food fundraising guidelines.

Combination Foods

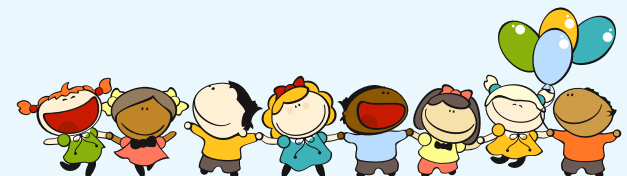
Are any “entrée-like” items that contain a protein and a grain. Combination foods may **ONLY be sold 30 minutes after the end of the school day.**

Examples of Combination Foods

Pizza
Chicken Sandwich
Burger
Hotdog
Sandwich



Per State Statute, there are **NO EXEMPTIONS** for **Combination Foods.**



Let's Develop
Healthy
Practices!